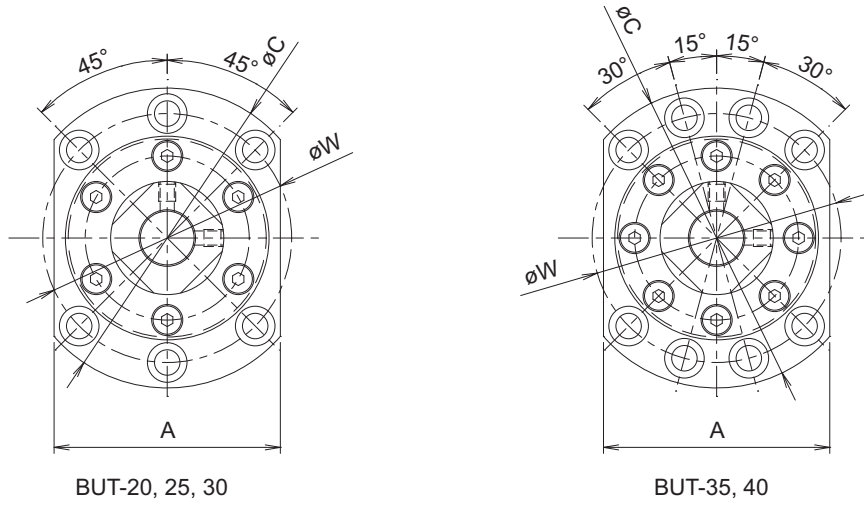


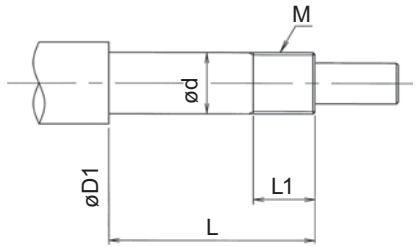
BUT series



Model No.	$\phi d1$	A	ϕC	$\phi D1$	E	F	H	J	T	ϕR	U
BUT-20	20	80	106	70	60	18	32	28	15	40	32
BUT-25	25	100	130	85	66	20	33	33	18	45	36
BUT-30	30	100	130	85	66	20	33	33	18	50	41
BUT-35	35	106	142	95	66	25	33	33	18	55	46
BUT-40	40	106	142	95	66	25	33	33	18	60	50

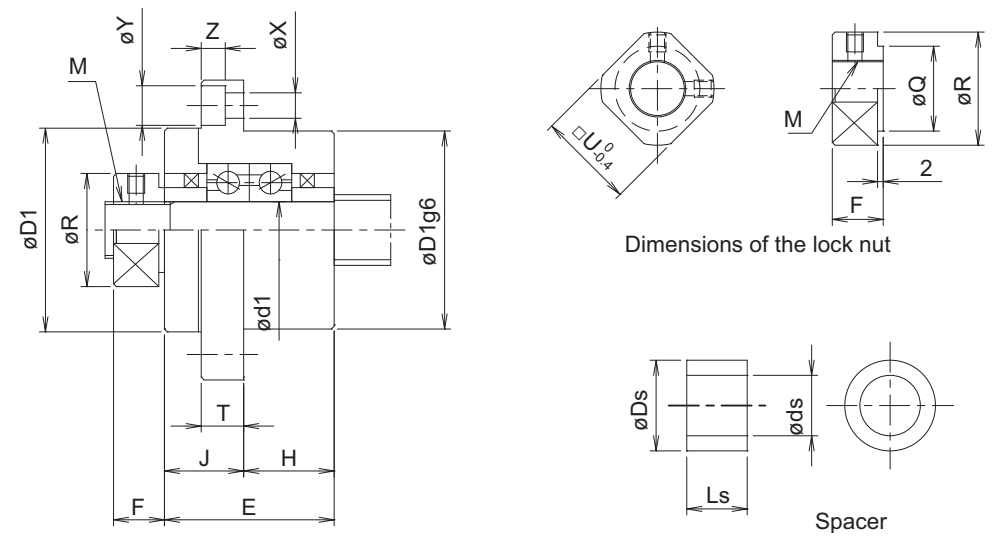
(Note 1) The above is the net weight and does not include that of the packing material.

• BUT (round type) Dimensions of the fixed shaft end for bearing mounting (for reference)



Model No.	Dimensions of the fixed shaft end for bearing mounting				
	$\phi D1$	$\phi d1$	L	L1	M
BUT-20	30	$20^{+0.003}_{-0.012}$	81	23	M20×1
BUT-25	40	$25^{+0.003}_{-0.012}$	89	25	M25×1.5
BUT-30	40	$30^{+0.003}_{-0.012}$	89	25	M30×1.5
BUT-35	50	$35^{+0.004}_{-0.015}$	94	30	M35×1.5
BUT-40	50	$40^{+0.004}_{-0.015}$	94	30	M40×1.5

Support unit for machine tools: ROUND TYPE FIXED END UNIT



(Unit: mm)

ϕQ	ϕW	ϕX	ϕY	Z	M	ϕds	ϕDs	Ls	Mass (kg)
30	88	9	14	8.5	M20×1	20	30	15	2.0
40	110	11	17.5	11	M25×1.5	25	40	18	3.4
40	110	11	17.5	11	M30×1.5	30	40	18	3.3
50	121	11	17.5	11	M35×1.5	35	50	18	3.9
50	121	11	17.5	11	M40×1.5	40	50	18	3.8

