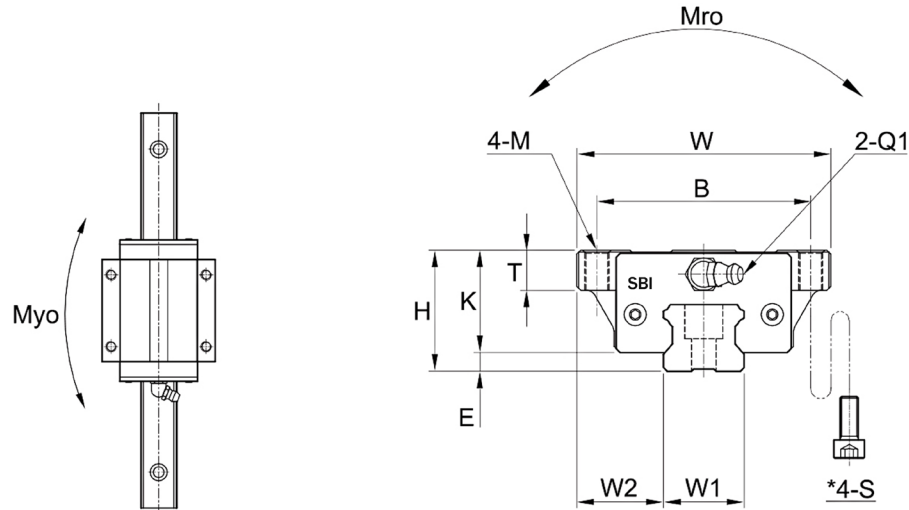


SBI Linear Rail Series

Flange Series: FL, FLL, FLS



Model	Mounting dimension				Block dimensions												
	H	W	L	E	Mounting tap hole				L1	T±1	K	Grease fitting					
					B	J	M	DP				T1	N1	T2	N2	Q1	*Q2
SBI15 FLS	24	47	56.8	3	38	30	M5	M4	38.2	11	21	4.5	5.5	3.8	3.8	M4x0.7	ø3.5
SBI15 FL	24	47	63.8	3	38	30	M5	M4	45.2	9	21	4.5	5.5	3.8	3.8	M4x0.7	ø3.5
SBI15 FLL	24	47	79.4	3	38	30	M5	M4	60.8	9	21	4.5	5.5	3.8	3.8	M4x0.7	ø3.5
SBI20 FLS	30	63	73.8	4.6	53	40	M6	M5	51.8	12	25.4	6	12	5.8	5	M6x0.75	ø3.5
SBI20 FL	30	63	78.8	4.6	53	40	M6	M5	56.8	12	25.4	6	12	5.8	5	M6x0.75	ø3.5
SBI20 FLL	30	63	96.4	4.6	53	40	M6	M5	74.4	12	25.4	6	12	5.8	5	M6x0.75	ø3.5
SBI25 FLS	36	70	83	5.5	57	45	M8	M6	61	13	30.5	6	12	5	5	M6x0.75	ø3.5
SBI25 FL	36	70	92	5.5	57	45	M8	M6	70	13	30.5	6	12	5	5	M6x0.75	ø3.5
SBI25 FLL	36	70	108	5.5	57	45	M8	M6	86	13	30.5	6	12	5	5	M6x0.75	ø3.5
SBI30 FLS	42	90	96.8	7	72	52	M10	M8	68.8	15.5	35	8.5	12	7.8	5	M6x0.75	ø5.7
SBI30 FL	42	90	107.6	7	72	52	M10	M8	79.6	15.5	35	8.5	12	7.8	5	M6x0.75	ø5.7
SBI30 FLL	42	90	131.6	7	72	52	M10	M8	103.6	15.5	35	8.5	12	7.8	5	M6x0.75	ø5.7
SBI35 FLS	48	100	108.2	8	82	62	M10	M8	78.2	15	40.5	8	12	8	6	M6x0.75	ø5.7
SBI35 FL	48	100	124.6	7.5	82	62	M10	M8	94.6	15	40.5	8	12	8	6	M6x0.75	ø5.7
SBI35 FLL	48	100	152.6	7.5	82	62	M10	M8	122.6	15	40.5	8	12	8	6	M6x0.75	ø5.7
SBI45 FL	60	120	142	9	100	80	M12	M10	108	18	51	10.5	13.5	9.3	6.5	PT1/8	ø5.7
SBI45 FLL	60	120	174	9	100	80	M12	M10	140	18	51	10.5	13.5	9.3	6.5	PT1/8	ø5.7
SBI55 FL	70	140	172.4	12	116	95	M14	M12	131	22	58	12	13	12	8	PT1/8	ø8.7
SBI55 FLL	70	140	211.8	12	116	95	M14	M12	170.4	22	58	12	13	12	8	PT1/8	ø8.7
SBI65 FL	90	170	219.8	19	142	110	M16	M14	170.4	26	71	14	13	14	10	PT1/8	ø8.7
SBI65 FLL	90	170	272.2	19	142	110	M16	M14	222.8	26	71	14	13	14	10	PT1/8	ø8.7

C (Basic dynamic load rating), Co (Basic static load rating)

*S: Bolt size for bottom mounting type of block.

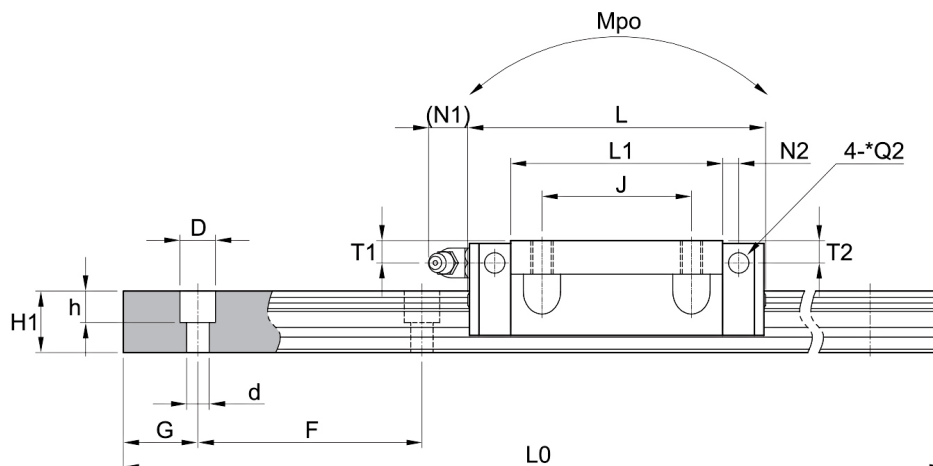
*Q2: The hole of side grease nipple is not made to prevent a foreign substance from entering inside.

When you order the side grease nipple, we build it by ourselves.

LINEAR RAIL SYSTEM

Available for Quick Delivery

Flange Series: FL, FLL, FLS



Model	Rail dimensions									Basic load rating (kN)		Permissible static moment (kN·m)			Mass	
	W1	W2	H1	F	Bolt hole			G	Max Rail Length L0	C	Co	Mro	Mpo	Myo	Block (kg)	Rail (kg/m)
					d	D	h									
SBI15 FLS	15	16	13	60	4.5	7.5	5.5	20	3000	12.3	18.3	0.13	0.08	0.08	0.2	1.3
SBI15 FL	15	16	13	60	4.5	7.5	5.5	20	3000	14.1	24.1	0.16	0.17	0.17	0.24	1.3
SBI15 FLL	15	16	13	60	4.5	7.5	5.5	20	3000	17.1	31.7	0.21	0.29	0.29	0.3	1.3
SBI20 FLS	20	21.5	16.5	60	6	9.5	8.5	20	4000	20.2	29.1	0.29	0.18	0.18	0.44	2.2
SBI20 FL	20	21.5	16.5	60	6	9.5	8.5	20	4000	22.2	38.2	0.36	0.33	0.33	0.46	2.2
SBI20 FLL	20	21.5	16.5	60	6	9.5	8.5	20	4000	27.9	50	0.47	0.56	0.56	0.6	2.2
SBI25 FLS	23	23.5	20	60	7	11	9	20	4000	28.9	42.8	0.49	0.32	0.32	0.66	3
SBI25 FL	23	23.5	20	60	7	11	9	20	4000	31.5	52.1	0.56	0.56	0.56	0.75	3
SBI25 FLL	23	23.5	20	60	7	11	9	20	4000	36.7	64.4	0.69	0.84	0.84	0.8	3
SBI30 FLS	28	31	23	80	9	14	12	20	4000	39.2	57.7	0.8	0.49	0.49	1.08	4.25
SBI30 FL	28	31	23	80	9	14	12	20	4000	42.8	65.4	0.85	0.77	0.77	1.25	4.25
SBI30 FLL	28	31	23	80	9	14	12	20	4000	51.3	84.7	1.1	1.3	1.3	1.65	4.25
SBI35 FLS	34	33	26	80	9	14	12	20	4000	52	73.3	1.24	0.71	0.71	1.53	6.02
SBI35 FL	34	33	26	80	9	14	12	20	4000	59.5	89.1	1.42	1.28	1.28	1.92	6.02
SBI35 FLL	34	33	26	80	9	14	12	20	4000	71.3	115	1.83	2.12	2.12	2.43	6.02
SBI45 FL	45	37.5	32	105	14	20	17	22.5	4000	79.2	116	2.48	1.9	1.9	3.25	9.77
SBI45 FLL	45	37.5	32	105	14	20	17	22.5	4000	94.8	151	3.21	3.14	3.14	4.4	9.77
SBI55 FL	53	43.5	38	120	16	23	20	30	4000	127	182	4.81	2.97	2.97	5.08	13.72
SBI55 FLL	53	43.5	38	120	16	23	20	30	4000	148	225	5.95	4.78	4.78	6.58	13.72
SBI65 FL	63	53.5	53	150	18	26	22	35	4000	188	262	8.24	5.57	5.57	10.2	23.17
SBI65 FLL	63	53.5	53	150	18	26	22	35	4000	233	354	11.2	9.86	9.86	13.3	23.17