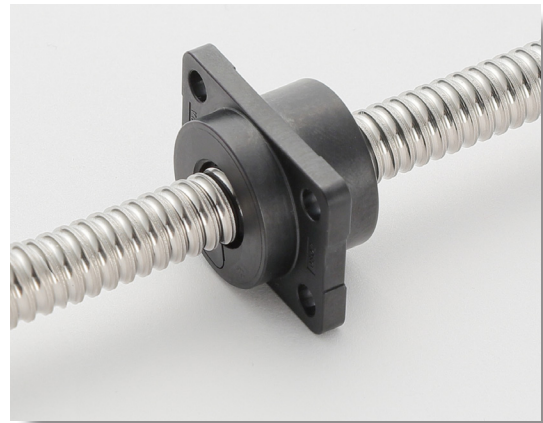


## RW Series: Resin Nut Ball Screw

The Resin Nut Ball Screw utilizes a superior engineering plastic (PPS resin) which has outstanding mechanical properties and is resistance to chemicals for the nut part. Stainless steel is used for the screw shaft and the internal circulating balls.

Due to the merits of the ball screw characteristic transmission efficiency, the whining noise heard in lead screws will not occur, resulting in a quiet and smooth operation over all strokes, from low speeds to high speeds.

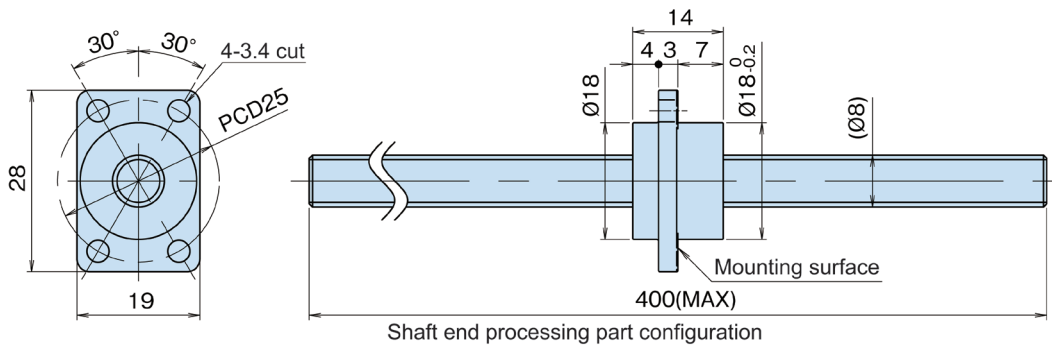
In addition, due to the utilization of components made from resin, the Resin Nut Ball Screw is more economical and has shorter delivery times than the previous steel-made ball screws, which optimizes solutions for equipment used in light loading applications.



### Ordering Number: RW Series

RW	08 (Shaft dia.)	02 (Lead)	P	S	-	B	P	N	R	-	Overall length of screw shaft	×	Thread length	-	C7	M
----	--------------------	--------------	---	---	---	---	---	---	---	---	----------------------------------	---	------------------	---	----	---

### Configuration Dimensions: RW Series



### Specifications and Performance: RW Series

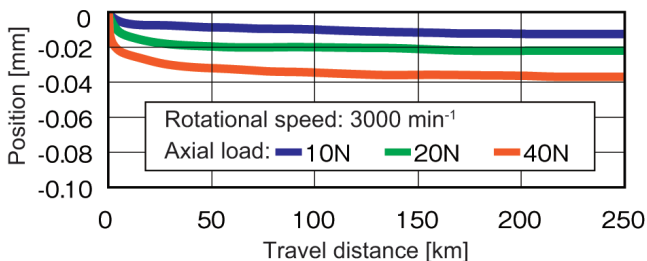
#### ● Performance

Travel lifetime: 250 km or more (1.25 million or more return trips at a stroke of 100 mm)  
 Permissible axial load: 40 N  
 Permissible rotational speed: 3000 min<sup>-1</sup>  
 Initial axial clearance: 0.030 mm or less

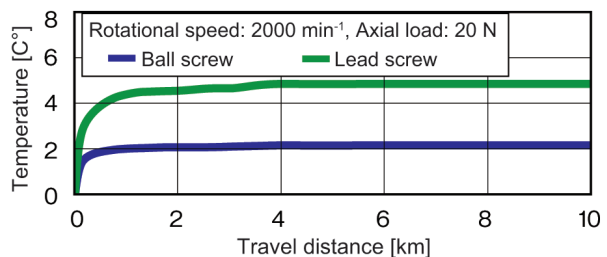
#### ● Materials

Screw shaft: Stainless steel (SUS304)  
 Nut: Poly Phenylene Sulfide (PPS)  
 Ball: Stainless steel (SUS440C)  
 \* The standard grease used is Alvania Grease S2.

Test conditions: Shaft diameter: Ø8, lead: 2 mm, stroke: 100 mm, and loading direction: vertical



Outstanding abrasion resistance:  
 Long-period stable positioning accuracy



Outstanding temperature characteristics: Low heat generation ability that can only be realized by ball screws