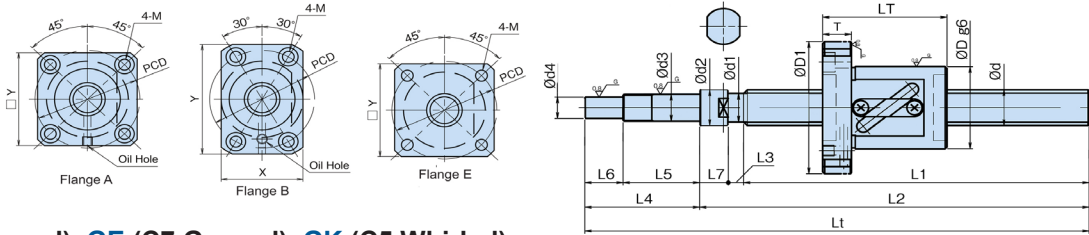


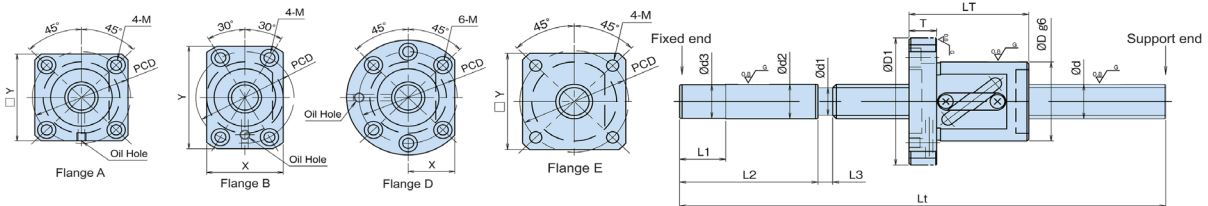
# G-Series: General Use Tube Method

Applications: Machine Tool, Transfer Machine, Precise Positioning

## GP Series (C3 GROUND)



## GG (C5 Ground), GE (C7 Ground), GK (C5 Whirled)



Ordering Example: G-Series

Series	Screw Shaft Dia	Shaft Lead	# of Circuits	Nut Type	Flange Type	Ball Return System	Wiper Material	Thread Direction	Overall Screw Shaft Length	Shaft End Type	Thread Length	Accuracy Grade	Axial Clearance
<b>GG</b>	<b>15</b>	<b>05</b>	<b>D</b>	<b>S</b>	<b>B</b>	<b>A</b>	<b>L</b>	<b>R</b>	<b>600</b>	<b>X</b>	<b>557</b>	<b>C5</b>	<b>S</b>
<b>1</b>	<b>2</b>	<b>3</b>	<b>4</b>	<b>5</b>	<b>6</b>	<b>7</b>	<b>8</b>	<b>9</b>	<b>10</b>	<b>11</b>	<b>12</b>	<b>13</b>	<b>14</b>

## Shaft Dimensions: GP Series (C3 GROUND Thread Accuracy)

Model No.	Shaft diameter d	Lead (mm)	Root diameter d1	Circuit & turn	Axial clearance	Basic dynamic load rating (N)	Basic static load rating (N)	Shaft dimensions										
								Shoulder		Shaft			Shaft Ends					
								d2	L7	L1 (mm)	L2 (mm)	Lt (mm)	L3	L4	L5	d3	L6	d4
GP0802DS-AAFR-0170B-C3F/S	8	2	6.6	2.5x1	F/S	1950 (1220)	2600 (1300)	11.5	8	122	133	170	3	37	27	8	10	6
2250 (1410)						3300 (1650)	162			173	210	3	202					
GP1002DS-EAFR-0210B-C3F/S	10	2	8.6	2.5x1	F/S	2450 (1540)	4100 (2050)	11.5	8	242	255	300	3	37	27	8	10	6
5950 (3740)						9800 (4900)	272			283	320	3	342					
GP1202DS-AAFR-0300B-C3F/S	12	2	10.6	2.5x1	F/S	2700 (1700)	5500 (2750)	14	10	242	255	300	3	45	30	10	15	8
6900 (4340)						12500 (6250)	240			255	300	5	542					
GP1205DS-BALR-0300B-C3F/S	12	5	9.5	2.5x1	F/S	2700 (1700)	5500 (2750)	14	10	242	255	300	3	45	30	10	15	8
6900 (4340)						12500 (6250)	240			255	300	5	542					
GP1502DS-BAPR-0300B-C3F/S	15	2	13.6	2.5x1	F/S	4100 (2580)	8550 (4270)	15	10	340	355	400	5	45	30	12	15	10
6900 (4340)						12500 (6250)	340			355	400	5	540					
GP1504DS-BALR-0400B-C3F/S	15	4	13.1	2.5x1	F/S	6900 (4340)	12500 (6250)	15	10	340	355	400	5	45	30	12	15	10
6900 (4340)						12500 (6250)	340			355	400	5	540					
GP1505DS-BALR-0400B-C3F/S	15	5	12.5	2.5x1	F/S	6900 (4340)	12500 (6250)	15	10	340	355	400	5	45	30	12	15	10
6900 (4340)						12500 (6250)	340			355	400	5	540					
GP2004ES-AALR-0605B-C3F/S	20	4	18.1	2.5x2	F/S	8600	23400	20	15	525	545	605	5	60	40	15	20	12
8600						23400	525			545	605	5	525					
GP2005DS-BALR-0605B-C3F/S	20	5	17.5	2.5x1	F/S	8600	23400	20	15	525	545	605	5	60	40	15	20	12
8600						23400	525			545	605	5	525					

Axial clearance S: 0.00mm, F: Max 0.005mm Wiper Material F: Felt, P: Plastic or L: Lip Seal option

## Nut Dimensions: GP Series (C3 GROUND Thread Accuracy)

Model No.	Body diameter (mm)	LT	Nut dimensions							Wiper	Oil hole
			Flange								
			T	D1	Y	X	PCD P	Bolt M	Configuration		
GP0802DS-AAFR-0170B-C3F/S	20	30	5	36	28	---	27	M3	A	F	
5			36	28	---	27	M3	A	F		
GP0802DS-AAFR-0250B-C3F/S	23	30	5	40	31	---	31	M4	E	F	N/A
5			40	31	---	31	M4	E	F	N/A	
GP1002DS-EAFR-0210B-C3F/S	25	35	8	44	34	---	33	M4	A	P	N/A
8			44	34	---	33	M4	A	P	N/A	
GP1202DS-AAFR-0300B-C3F/S	30	44	8	50	45	32	40	M4	B	L	
8			50	45	32	40	M4	B	L		
GP1205DS-BALR-0300B-C3F/S	30	37	8	54	48	32	41	M5		P	
8			54	48	32	41	M5		P		
GP1502DS-BAPR-0300B-C3F/S	32	41	10	56	48	32	43	M5	B	L	M6
10			56	48	32	43	M5	B	L	M6	
GP1504DS-BALR-0400B-C3F/S	34	44	10	58	50	34	45	M5		L/S	
10			58	50	34	45	M5		L/S		
GP1505DS-BALR-0600B-C3F/S	40	49	10	64	49	---	51	M5	A	L	M6
10			64	49	---	51	M5	A	L	M6	
GP2004ES-AALR-0605B-C3F/S	40	48	12	68	60	40	53	M6	B	L/S	
12			68	60	40	53	M6	B	L/S		

# G-Series: General Use Tube Method

Applications: Machine Tool, Transfer Machine, Precise Positioning

## Shaft Dimensions: GG (C5 Ground), GE (C7 Ground), GK (C5 Whirled)

Model No.	Shaft diameter (mm) d	Lead (mm)	Root diameter d1	Circuit & turn	Axial clearance	Basic dynamic load rating (N)	Basic static load rating (N)	Shaft dimensions						
								Shaft ends					Overall Screw Shaft Length Lt (mm)	
								d2	d3	L1	L2	L3		
GE/GG0802DS-AANR-xxxx A	8	2	6.6	2.5x1	M/F	1950	2600	12	11.7	20	45	3	215	
GE/GG0804DS-BAFR-xxxx A		4	6.3			6	215/340							
GE/GG1002DS-EANR-xxxx A	10	2	8.6	2.5x1		2250	3300	10	9.7	20	55	3	250/320	
GE/GG1004DS-BAPR-xxxx A		4	8.1			5	255/385/455							
GE/GG1010AS-BAPR-xxxx A		10	1.5x1	8		255/455								
GE/GG/GK1202DS-AAPR-xxxx A		2		10.6		3	300/455							
GE/GG/GK1204DS-AALR-xxxx A	4	10.1	2.5x1	3600		6750	12	11.7	20	55	5	405/605		
GE/GG/GK1205DS-BALR-xxxx A	5	9.5		5		305/455								
GE/GG/GK1210AS-BALR-xxxx A	10		1.5x1	5		455/605								
GE/GG/GK1220AS-BALR-xxxx A	20	3		405/605/900										
GE/GG/GK1502DS-BAPR-xxxx A	15	2	13.6	2.5x1		2700	5500	15	14.5	25	55	3	300/600	
GE/GG/GK1504DS-BALR-xxxx A		4	13.1			5	600/1100							
GE/GG/GK1505DS-BALR-xxxx A		5	12.5	1.5x1		6900	12500	25	25	55	5	5	600/1100	
GE/GG/GK1510AS-BALR-xxxx A		10				5	600/900/1100							
GE/GG/GK1510DS-BALR-xxxx A		10	2.5x1	5		600/900/1100								
GE/GG/GK1515AS-BALR-xxxx A		15		5		600/900/1100								
GE/GG/GK1520AS-BALR-xxxx A		20	5	600/900/1100										
GE/GG/GK1616AS-BALR-xxxx A		16	16	13.5		1.5x1	4750	8300	16	15.5	25	55	5	600/900
GE/GG/GK2004ES-AALR-xxxx A	20	4	18.1	2.5x2		8600	23400	20	19.5	25	75	8	5	605
GE/GG/GK2005DS-BALR-xxxx A		5	17.5			5	605/1005/1505							
GE/GG/GK2010DS-BALR-xxxx A		10	16	8	605/1005/1505/1805									
GE/GG/GK2020AS-BALR-xxxx A		20	15.9	1.5x1	9200	16200	1005/1505							
GE/GG/GK2505DS-AALR-xxxx A	25	5	22.5	2.5x1	9400	22200	25	24.5	25	100	8	5	600/1000/1505	
GE/GG/GK2510DS-BALR-xxxx A		10	21		8	1020/1520								
GE/GG/GK2520AS-BALR-xxxx A		20		8	1020/1520									
GE/GG/GK2525AS-BALR-xxxx A		25	1.5x1	8	1020/1520									
GE/GG3205ES-DALR-xxxx A	32	5	29.5	2.5x2	19000	57200	32	31.5	25	150	5	5	600/1000	
GE/GG3210DS-DALR-xxxx A		10	27.2		10	1000/1600/2000								

xxxx : overall length Axial clearance M: Max 0.030mm, F:Max 0.005mm Wiper Material N: No wiper, F: Felt; P: Plastic

## Nut Dimensions: GG (C5 Ground), GE (C7 Ground), GK (C5 Whirled)

Model No.	Nut dimensions												
	Body diameter D	Lt	Flange							Mounting Bolt hole M	Shape	Type of Wiper	Oil hole Q
			T	D1	X	Y	PCD P						
GE/GG0802DS-AANR-xxxx-A	20	30	5	36	28	---	---	27	M3	A	N	N/A	
GE/GG0804DS-BAFR-xxxx-A	22	30	5	38	34	24	---	29	M3	B	F		
GE/GG1002DS-EANR-xxxx-A	23	27	5	40	31	---	---	31	M4	E	N		
GE/GG1004DS-BAPR-xxxx-A	26	37	8	46	42	28	---	---	M4	B	P		
GE/GG1010AS-BAPR-xxxx-A	28	40	8	47	45	30	---	---	M4	B			
GE/GG/GK1202DS-AAPR-xxxx-A	25	35	8	44	34	---	---	33	M4	A	L		
GE/GG/GK1204DS-AALR-xxxx-A	30	41	10	54	41	---	---	41	M5				
GE/GG/GK1205DS-BALR-xxxx-A	30	44	10	50	45	---	---	40	M4	B	L/S		
GE/GG/GK1210AS-BALR-xxxx-A	30	49	12	54	48	32	---	41	M5				
GE/GG/GK1220AS-BALR-xxxx-A	32	68	12	56	48	---	---	43	M5	B	L/S		
GE/GG/GK1502DS-BAPR-xxxx-A	30	37	10	54	48	32	---	41	M5			P	M6
GE/GG/GK1504DS-BALR-xxxx-A	32	41	10	56	48	32	---	43	M5	L			
GE/GG/GK1505DS-BA*R-xxxx-A	34	44	12	58	50	34	45	45	M5	B	L/S		
GE/GG/GK1510AS-BA*R-xxxx-A		52							M5				
GE/GG/GK1510DS-BA*R-xxxx-A		52							M5				
GE/GG/GK1515AS-BA*R-xxxx-A		54							M5				
GE/GG/GK1520AS-BA*R-xxxx-A	62	M5											
GE/GG/GK1616AS-BT*R-xxxx-A	34	54	12	58	50	34	45	45	M5	L/S	M6		
GE/GG/GK2004ES-AALR-xxxx-A	40	49	10	64	49	---	---	51	M5	A	L	M6	
GE/GG/GK2005DS-BA*R-xxxx-A	40	48	12	68	60	40	53	53	M6	B	L/S		
GE/GG/GK2010DS-BA*R-xxxx-A	46	65	15	74	66	46	59	M6					
GE/GG/GK2020AS-BA*R-xxxx-A	46	70	15						46	59	M6		
GE/GG/GK2505DS-AA*R-xxxx-A	47	48	12	86	78	---	---	60	M6	A	L/S	M6	
GE/GG/GK2510DS-BA*R-xxxx-A	52	65	15			52	68	M8					
GE/GG/GK2520AS-BALR-xxxx-A	52	70	15	52	68	M8	B						
GE/GG/GK2525AS-BA*R-xxxx-A	54	77	15	54	70	M8							
GE/GG3205ES-DALR-xxxx-A	58	58	12	85	---	32	71	71	M6	D	L	M6	
GE/GG3210DS-DALR-xxxx-A	74	68	15	108	---	41	90	90	M8				