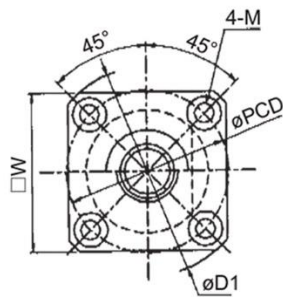
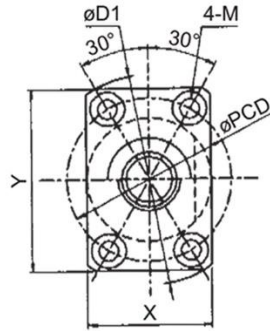


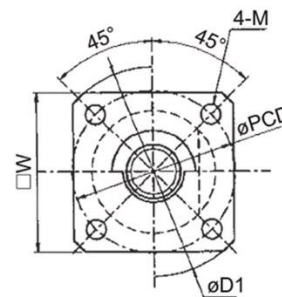
Custom Ball Screw: TUBE METHOD DOUBLE NUT (Accuracy grade C0-C5)



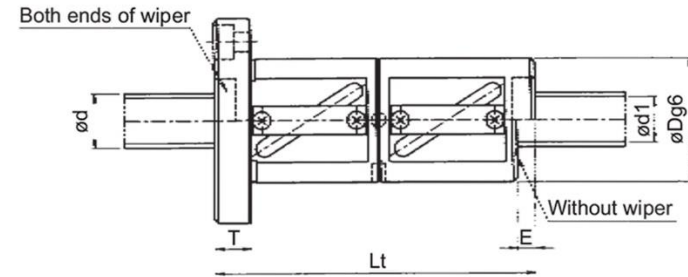
Flange type A



Flange type B



Flange type E



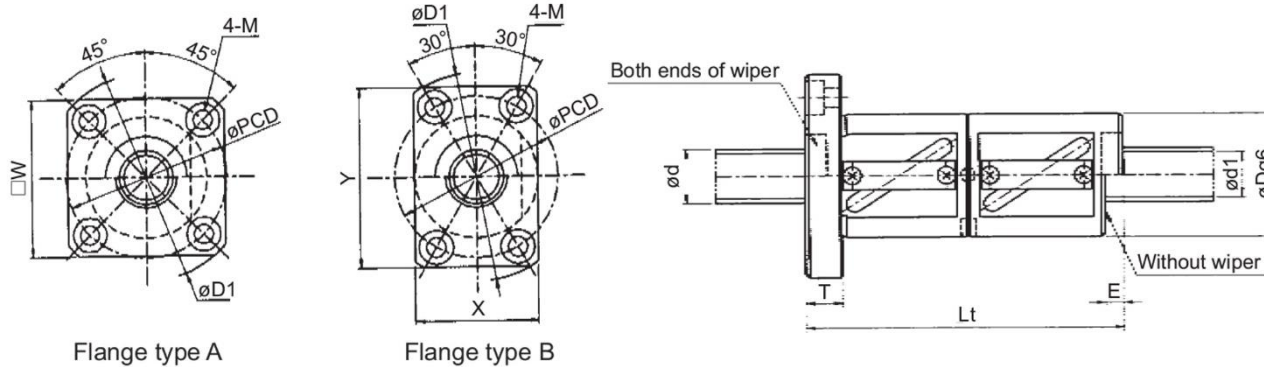
(Unit: mm)

Model No.	Screw shaft diameter d	Lead L	Ball diameter D_b	Root diameter d_r	Number of circuits Turn x Circuit	Basic dynamic load rating C (N)	Basic static load rating C_0 (N)	*Rigidity K_{ww} (N/ μ m)	Nut dimensions															Mass				
									Outer diameter D	Overall length L_t	Wiper material	Without wiper E	Flange thickness T	Flange outer diameter D_1	Flange type	Flange dimensions						Mounting hole			Nut (kg)	Screw shaft (kg/100mm)		
																W	X	Y	A	B	G	Q	PCD	Drill			Spot facing	Depth
GR0802DD-AAFR	8	2	1.5875	6.6	2.5x1	1950	2600	100	20	54	F	3	5	36	A	28	-	-	-	-	-	-	27	3.4	6.5	3.3	0.12	0.04
GR082FDD-AAFR	8	2.5	2.0000	6.3	2.5x1	2350	3300	100	22	54	F	2	5	38	A	29	-	-	-	-	-	-	29	3.4	6.5	3.3	0.14	0.04
GR0803DD-AAFR	8	3	2.0000	6.3	2.5x1	2350	3300	100	22	54	F	3	5	38	A	29	-	-	-	-	-	-	29	3.4	6.5	3.3	0.14	0.04
GR0804DD-AAFR	8	4	2.0000	6.3	2.5x1	2350	3300	100	22	54	F	3	5	38	A	29	-	-	-	-	-	-	29	3.4	6.5	3.3	0.14	0.04
GR1002DD-EAFR	10	2	1.5875	8.6	2.5x1	2250	3300	120	23	54	F	3	5	40	E	31	-	-	-	-	-	-	31	4.5	-	-	0.15	0.06
GR102FDD-AAFR	10	2.5	2.0000	8.3	2.5x1	2700	4200	120	24	60	F	5	8	43	A	33	-	-	-	-	-	-	32	4.5	8	4.4	0.19	0.06
GR1003DD-AAPR	10	3	2.0000	8.3	2.5x1	2700	4200	120	24	60	P	6	8	43	A	33	-	-	-	-	-	-	32	4.5	8	4.4	0.19	0.06
GR1004DD-AAPR	10	4	2.3812	8.1	2.5x1	3350	5900	120	26	65	P	3	8	45	A	35	-	-	-	-	-	-	34	4.5	8	4.4	0.24	0.06
GR1004DD-BAPR	10	4	2.3812	8.1	2.5x1	3350	5900	120	26	65	P	3	8	46	B	-	28	42	-	-	-	-	36	4.5	8	4.4	0.24	0.06
GR1005DD-AAPR	10	5	2.3812	8.1	2.5x1	3350	5900	120	26	70	P	5	8	45	A	35	-	-	-	-	-	-	34	4.5	8	4.4	0.26	0.06
GR1005DD-BAPR	10	5	2.3812	8.1	2.5x1	3350	5900	120	26	70	P	5	8	46	B	-	28	42	-	-	-	-	36	4.5	8	4.4	0.26	0.06
GR1202DD-AAPR	12	2	1.5875	10.6	2.5x1	2450	4100	140	25	59	P	5	8	44	A	34	-	-	-	-	-	-	33	4.5	8	4.4	0.20	0.09
GR122FDD-AAPR	12	2.5	2.0000	10.3	2.5x1	2950	5100	140	26	59	P	4	8	45	A	35	-	-	-	-	-	-	34	4.5	8	4.4	0.21	0.09
GR1203DD-AAPR	12	3	2.0000	10.3	2.5x1	2950	5100	140	26	59	P	5	8	45	A	35	-	-	-	-	-	-	34	4.5	8	4.4	0.21	0.09
GR1204DD-AALR	12	4	2.3812	10.1	2.5x1	3600	6750	140	30	69	L	5	10	54	A	41	-	-	-	-	-	-	41	5.5	9.5	5.4	0.36	0.09
GR1205DD-AALR	12	5	3.1750	9.5	2.5x1	5950	9800	150	30	79	L	3	10	54	A	41	-	-	-	-	-	-	41	5.5	9.5	5.4	0.39	0.09
GR1205DD-BALR	12	5	3.1750	9.5	2.5x1	5950	9800	150	30	79	L	3	10	50	B	-	32	45	-	-	-	-	40	4.5	8	4.4	0.37	0.09
GR1206DD-AAPR	12	6	3.1750	9.5	2.5x1	5950	9800	150	30	81	P	3	10	54	A	41	-	-	-	-	-	-	41	5.5	9.5	5.4	0.39	0.09
GR1206DD-BAPR	12	6	3.1750	9.5	2.5x1	5950	9800	150	30	81	P	3	10	54	B	-	32	48	-	-	-	-	41	5.5	9.5	5.4	0.38	0.09

Note: • The rigidity indicated with the *mark in the above list represents the value applied to the axial load about 3 times or less of the preload, which is equivalent to 1/15 of basic dynamic load rating (C). It is the operational value based on the result of rigidity testing including the rigidity of the nut.

• Wiper material F: Felt wiper, P: Plastic wiper, L: Lip seal

Custom Ball Screw: TUBE METHOD DOUBLE NUT (Accuracy grade C0-C5)

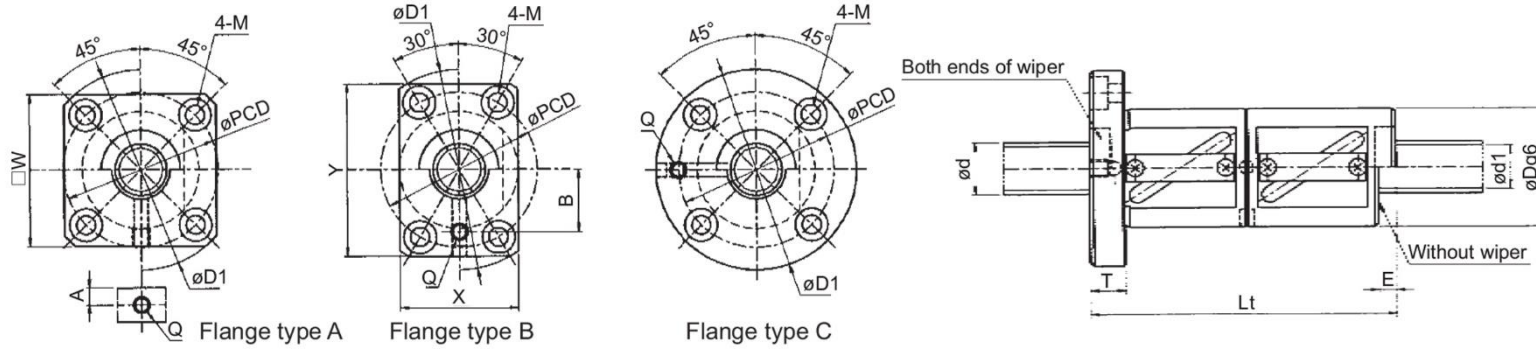


(Unit: mm)

Model No.	Screw shaft diameter d	Lead L	Ball diameter D_b	Root diameter d_r	Number of circuits Turn x Circuit	Basic dynamic load rating C (N)	Basic static load rating C_0 (N)	*Rigidity K_{rw} (N/ μ m)	Nut dimensions																Mass			
									Outer diameter D	Overall length L_t	Wiper material	Without wiper E	Flange thickness T	Flange outer diameter D_1	Flange type	Flange dimensions						Mounting hole				Nut (kg)	Screw shaft (kg/100mm)	
																W	X	Y	A	B	G	Q	PCD	M				
GR1502DD-AAPR	15	2	1.5875	13.6	2.5x1	2700	5500	180	30	61	P	5	10	54	A	41	-	-	-	-	-	-	41	5.5	9.5	5.4	0.30	0.14
GR1502DD-BAPR	15	2	1.5875	13.6	2.5x1	2700	5500	180	30	61	P	5	10	54	B	-	32	48	-	-	-	-	41	5.5	9.5	5.4	0.29	0.14
GR152FDD-AAPR	15	2.5	2.0000	13.3	2.5x1	3400	6500	180	30	61	P	4	10	54	A	41	-	-	-	-	-	-	41	5.5	9.5	5.4	0.30	0.14
GR152FDD-BAPR	15	2.5	2.0000	13.3	2.5x1	3400	6500	180	30	61	P	4	10	54	B	-	32	48	-	-	-	-	41	5.5	9.5	5.4	0.29	0.14
GR1503DD-AAPR	15	3	2.0000	13.3	2.5x1	3400	6500	180	30	61	P	5	10	54	A	41	-	-	-	-	-	-	41	5.5	9.5	5.4	0.30	0.14
GR1503DD-BAPR	15	3	2.0000	13.3	2.5x1	3400	6500	180	30	61	P	5	10	54	B	-	32	48	-	-	-	-	41	5.5	9.5	5.4	0.29	0.14
GR1504DD-AALR	15	4	2.3812	13.1	2.5x1	4100	8550	180	32	73	L	3	10	56	A	43	-	-	-	-	-	-	43	5.5	9.5	5.4	0.39	0.14
GR1504DD-BALR	15	4	2.3812	13.1	2.5x1	4100	8550	180	32	73	L	3	10	56	B	-	32	48	-	-	-	-	43	5.5	9.5	5.4	0.37	0.14
GR1505DD-AALR	15	5	3.1750	12.5	2.5x1	6900	12500	190	34	79	L	3	10	58	A	44	-	-	-	-	-	-	45	5.5	9.5	5.4	0.46	0.14
GR1505DD-BALR	15	5	3.1750	12.5	2.5x1	6900	12500	190	34	79	L	3	10	58	B	-	34	50	-	-	-	-	45	5.5	9.5	5.4	0.45	0.14
GR1506DD-AAPR	15	6	3.1750	12.5	2.5x1	6900	12500	190	34	81	P	3	10	58	A	44	-	-	-	-	-	-	45	5.5	9.5	5.4	0.47	0.14
GR1506DD-BAPR	15	6	3.1750	12.5	2.5x1	6900	12500	190	34	81	P	3	10	58	B	-	34	50	-	-	-	-	45	5.5	9.5	5.4	0.45	0.14
GR1604DD-AAPR	16	4	2.3812	14.1	2.5x1	4200	9000	190	34	73	P	3	10	58	A	44	-	-	-	-	-	-	45	5.5	9.5	5.4	0.43	0.16
GR1604DD-BAPR	16	4	2.3812	14.1	2.5x1	4200	9000	190	34	73	P	3	10	58	B	-	34	50	-	-	-	-	45	5.5	9.5	5.4	0.42	0.16
GR1605DD-AALR	16	5	3.1750	13.5	2.5x1	7400	13900	200	36	79	L	3	10	59	A	46	-	-	-	-	-	-	47	5.5	9.5	5.4	0.52	0.16
GR1605DD-BALR	16	5	3.1750	13.5	2.5x1	7400	13900	200	36	79	L	3	10	59	B	-	36	53	-	-	-	-	47	5.5	9.5	5.4	0.50	0.16
GR1606DD-AAPR	16	6	3.1750	13.5	2.5x1	7400	13900	200	36	81	P	3	10	59	A	46	-	-	-	-	-	-	47	5.5	9.5	5.4	0.53	0.16
GR1606DD-BAPR	16	6	3.1750	13.5	2.5x1	7400	13900	200	36	81	P	3	10	59	B	-	36	53	-	-	-	-	47	5.5	9.5	5.4	0.51	0.16

Note: • The rigidity indicated with the *mark in the above list represents the value applied to the axial load about 3 times or less of the preload, which is equivalent to 1/15 of basic dynamic load rating (C). It is the operational value based on the result of rigidity testing including the rigidity of the nut.
 • Wiper material P: Plastic wiper, L: Lip seal

Custom Ball Screw: TUBE METHOD DOUBLE NUT (Accuracy grade C0-C5)



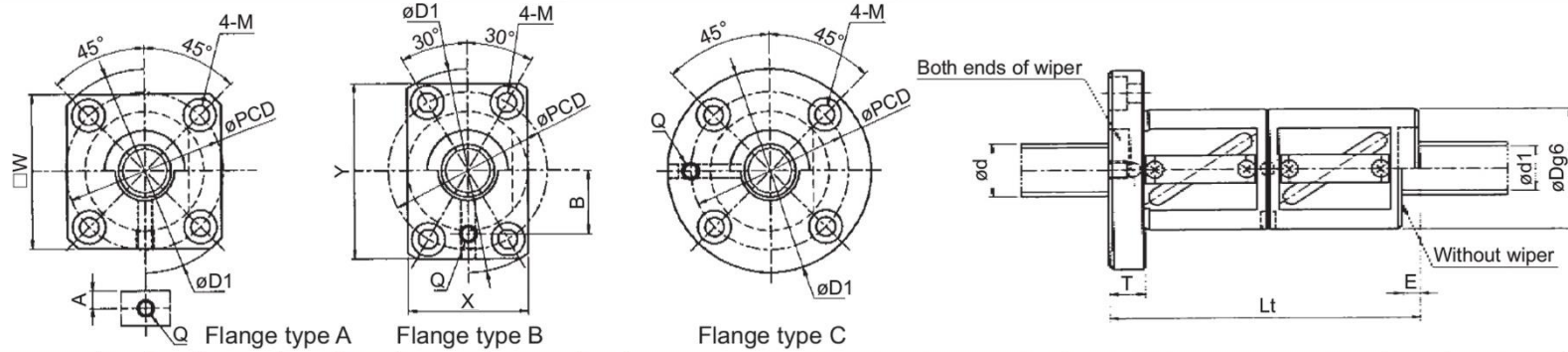
(Unit: mm)

Model No.	Screw shaft diameter d	Lead L	Ball diameter D_b	Root diameter d_r	Number of circuits Turn x Circuit	Basic dynamic load rating C_0 (N)	Basic static load rating C_0 (N)	*Rigidity K_{ww} (N/ μ m)	Nut dimensions															Mass				
									Outer diameter D	Overall length L	Wiper material	Without wiper E	Flange thickness T	Flange outer diameter D_1	Flange type	Flange dimensions					Mounting hole					Nut (kg)	Screw shaft (kg/100mm)	
																W	X	Y	A	B	G	Q	PCD	Drill	Spot facing			Depth
GR202FDD-AAPR	20	2.5	2.0000	18.3	2.5x1	3800	8800	230	38	61	P	4	10	62	A	47	-	-	5	-	-	M6	49	5.5	9.5	5.4	0.43	0.25
GR202FDD-CAPR	20	2.5	2.0000	18.3	2.5x1	3800	8800	230	38	61	P	4	10	62	C	-	-	-	-	-	-	M6	49	5.5	9.5	5.4	0.50	0.25
GR2004DD-AALR	20	4	2.3812	18.1	2.5x1	4700	11700	240	40	73	L	3	10	64	A	49	-	-	5.5	-	-	M6	51	5.5	9.5	5.4	0.57	0.25
GR2004DD-CALR	20	4	2.3812	18.1	2.5x1	4700	11700	240	40	73	L	3	10	64	C	-	-	-	-	-	-	M6	51	5.5	9.5	5.4	0.63	0.25
GR2004ED-AALR	20	4	2.3812	18.1	2.5x2	8600	23400	440	40	89	L	3	10	64	A	49	-	-	5.5	-	-	M6	51	5.5	9.5	5.4	0.67	0.25
GR2004ED-CALR	20	4	2.3812	18.1	2.5x2	8600	23400	440	40	89	L	3	10	64	C	-	-	-	-	-	-	M6	51	5.5	9.5	5.4	0.74	0.25
GR2005BD-AALR	20	5	3.1750	17.5	1.5x2	9800	21000	290	40	93	L	5	12	68	A	52	-	-	7	-	-	M6	53	6.6	11	6.5	0.72	0.25
GR2005BD-CALR	20	5	3.1750	17.5	1.5x2	9800	21000	290	40	93	L	5	12	68	C	-	-	-	-	-	-	M6	53	6.6	11	6.5	0.80	0.25
GR2005DD-BALR	20	5	3.1750	17.5	2.5x1	8350	17500	240	40	83	L	5	12	68	B	-	40	60	-	21	-	M6	53	6.6	11	6.5	0.63	0.25
GR2005DD-CALR	20	5	3.1750	17.5	2.5x1	8350	17500	240	40	83	L	5	12	68	C	-	-	-	-	-	-	M6	53	6.6	11	6.5	0.74	0.25
GR2005ED-AALR	20	5	3.1750	17.5	2.5x2	15150	35000	460	40	103	L	5	12	68	A	52	-	-	7	-	-	M6	53	6.6	11	6.5	0.78	0.25
GR2005ED-CALR	20	5	3.1750	17.5	2.5x2	15150	35000	460	40	103	L	5	12	68	C	-	-	-	-	-	-	M6	53	6.6	11	6.5	0.87	0.25
GR2006BD-AAPR	20	6	3.9688	16.6	1.5x2	12900	25600	290	44	109	P	5	12	72	A	55	-	-	7	-	-	M6	57	6.6	11	6.5	1.02	0.25
GR2006BD-CAPR	20	6	3.9688	16.6	1.5x2	12900	25600	290	44	109	P	5	12	72	C	-	-	-	-	-	-	M6	57	6.6	11	6.5	1.12	0.25
GR2006DD-AAPR	20	6	3.9688	16.6	2.5x1	11000	21300	240	44	85	P	5	12	72	A	55	-	-	7.5	-	-	M6	57	6.6	11	6.5	0.83	0.25
GR2006DD-CAPR	20	6	3.9688	16.6	2.5x1	11000	21300	240	44	85	P	5	12	72	C	-	-	-	-	-	-	M6	57	6.6	11	6.5	0.92	0.25
GR2008DD-AAPR	20	8	4.7625	16	2.5x1	13500	25100	240	46	111	P	5	15	74	A	56	-	-	10	-	-	M6	59	6.6	11	6.5	1.16	0.25
GR2008DD-CAPR	20	8	4.7625	16	2.5x1	13500	25100	240	46	111	P	5	15	74	C	-	-	-	-	-	-	M6	59	6.6	11	6.5	1.29	0.25
GR2010AD-AALR	20	10	4.7625	16	1.5x1	9200	16200	160	46	97	L	6	15	74	A	56	-	-	10	-	-	M6	59	6.6	11	6.5	1.03	0.25
GR2010AD-BALR	20	10	4.7625	16	1.5x1	9200	16200	160	46	97	L	6	15	74	B	-	46	66	-	24	-	M6	59	6.6	11	6.5	1.02	0.25
GR2010DD-AALR	20	10	4.7625	16	2.5x1	13500	25100	240	46	115	L	6	15	74	A	56	-	-	10	-	-	M6	59	6.6	11	6.5	1.19	0.25
GR2010DD-BALR	20	10	4.7625	16	2.5x1	13500	25100	240	46	115	L	6	15	74	B	-	46	66	-	24	-	M6	59	6.6	11	6.5	1.18	0.25

Note: • The rigidity indicated with the *mark in the above list represents the value applied to the axial load about 3 times or less of the preload, which is equivalent to 1/15 of basic dynamic load rating (C). It is the operational value based on the result of rigidity testing including the rigidity of the nut.

• Wiper material P: Plastic wiper, L: Lip seal

Custom Ball Screw: TUBE METHOD DOUBLE NUT (Accuracy grade C0-C5)



(Unit: mm)

Model No.	Screw shaft diameter d	Lead L	Ball diameter D_b	Root diameter d_r	Number of circuits Turn x Circuit	Basic dynamic load rating C (N)	Basic static load rating C_0 (N)	*Rigidity K_w (N/ μ m)	Nut dimensions																Mass			
									Outer diameter D	Overall length L_t	Wiper material	Without wiper E	Flange thickness T	Flange outer diameter D_1	Flange type	Flange dimensions						Mounting hole				Nut (kg)	Screw shaft (kg/100mm)	
																W	X	Y	A	B	G	Q	PCD	M				
GR2504DD-AAPR	25	4	2.3812	23.1	2.5x1	5200	14400	280	46	75	P	3	12	74	A	56	-	-	7.5	-	-	M6	59	6.6	11	6.5	0.75	0.38
GR2504DD-CAPR	25	4	2.3812	23.1	2.5x1	5200	14400	280	46	75	P	3	12	74	C	-	-	-	-	-	-	M6	59	6.6	11	6.5	0.86	0.38
GR2504ED-AAPR	25	4	2.3812	23.1	2.5x2	9400	28800	520	46	99	P	3	12	74	A	56	-	-	7	-	-	M6	59	6.6	11	6.5	0.94	0.38
GR2504ED-CAPR	25	4	2.3812	23.1	2.5x2	9400	28800	520	46	99	P	3	12	74	C	-	-	-	-	-	-	M6	59	6.6	11	6.5	1.05	0.38
GR2505BD-AALR	25	5	3.1750	22.5	1.5x2	11000	26600	350	47	93	L	5	12	74	A	57	-	-	7	-	-	M6	60	6.6	11	6.5	0.92	0.38
GR2505BD-CALR	25	5	3.1750	22.5	1.5x2	11000	26600	350	47	93	L	5	12	74	C	-	-	-	-	-	-	M6	60	6.6	11	6.5	1.02	0.38
GR2505DD-AALR	25	5	3.1750	22.5	2.5x1	9400	22200	300	47	83	L	5	12	74	A	57	-	-	7.5	-	-	M6	60	6.6	11	6.5	0.84	0.38
GR2505DD-CALR	25	5	3.1750	22.5	2.5x1	9400	22200	300	47	83	L	5	12	74	C	-	-	-	-	-	-	M6	60	6.6	11	6.5	0.93	0.38
GR2505ED-AALR	25	5	3.1750	22.5	2.5x2	17000	44400	560	47	103	L	5	12	74	A	57	-	-	7.5	-	-	M6	60	6.6	11	6.5	1.00	0.38
GR2505ED-CALR	25	5	3.1750	22.5	2.5x2	17000	44400	560	47	103	L	5	12	74	C	-	-	-	-	-	-	M6	60	6.6	11	6.5	1.10	0.38
GR2506BD-AALR	25	6	3.9688	21.6	1.5x2	14700	32400	360	50	109	L	5	12	78	A	59	-	-	7.5	-	-	M6	63	6.6	11	6.5	1.21	0.38
GR2506BD-CALR	25	6	3.9688	21.6	1.5x2	14700	32400	360	50	109	L	5	12	78	C	-	-	-	-	-	-	M6	63	6.6	11	6.5	1.34	0.38
GR2506DD-AALR	25	6	3.9688	21.6	2.5x1	12500	27000	300	50	85	L	5	12	78	A	59	-	-	7.5	-	-	M6	63	6.6	11	6.5	0.98	0.38
GR2506DD-CALR	25	6	3.9688	21.6	2.5x1	12500	27000	300	50	85	L	5	12	78	C	-	-	-	-	-	-	M6	63	6.6	11	6.5	1.10	0.38
GR2506ED-AALR	25	6	3.9688	21.6	2.5x2	22700	54000	560	50	121	L	5	12	78	A	59	-	-	7.5	-	-	M6	63	6.6	11	6.5	1.33	0.38
GR2506ED-CALR	25	6	3.9688	21.6	2.5x2	22700	54000	560	50	121	L	5	12	78	C	-	-	-	-	-	-	M6	63	6.6	11	6.5	1.45	0.38
GR2508DD-AAPR	25	8	4.7625	21	2.5x1	16100	33400	310	52	111	P	5	15	86	A	66	-	-	10	-	-	M6	68	9	14	8.6	1.45	0.38
GR2508DD-CAPR	25	8	4.7625	21	2.5x1	16100	33400	310	52	111	P	5	15	86	C	-	-	-	-	-	-	M6	68	9	14	8.6	1.62	0.38
GR2508GD-AAPR	25	8	4.7625	21	3.5x1	21400	46800	420	52	113	P	6	15	86	A	66	-	-	10	-	-	M6	68	9	14	8.6	1.47	0.38
GR2508GD-CAPR	25	8	4.7625	21	3.5x1	21400	46800	420	52	113	P	6	15	86	C	-	-	-	-	-	-	M6	68	9	14	8.6	1.64	0.38
GR2510DD-AALR	25	10	4.7625	21	2.5x1	16100	33400	310	52	115	L	6	15	86	A	66	-	-	10	-	-	M6	68	9	14	8.6	1.50	0.38
GR2510DD-BALR	25	10	4.7625	21	2.5x1	16100	33400	310	52	115	L	6	15	86	B	-	52	78	-	30	-	M6	68	9	14	8.6	1.46	0.38
GR2510GD-AALR	25	10	4.7625	21	3.5x1	21400	46800	420	52	135	L	6	15	86	A	66	-	-	10	-	-	M6	68	9	14	8.6	1.71	0.38
GR2510GD-BALR	25	10	4.7625	21	3.5x1	21400	46800	420	52	135	L	6	15	86	B	-	52	78	-	30	-	M6	68	9	14	8.6	1.68	0.38

Note: • The rigidity indicated with the *mark in the above list represents the value applied to the axial load about 3 times or less of the preload, which is equivalent to 1/15 of basic dynamic load rating (C). It is the operational value based on the result of rigidity testing including the rigidity of the nut.
 • Wiper material P: Plastic wiper, L: Lip seal