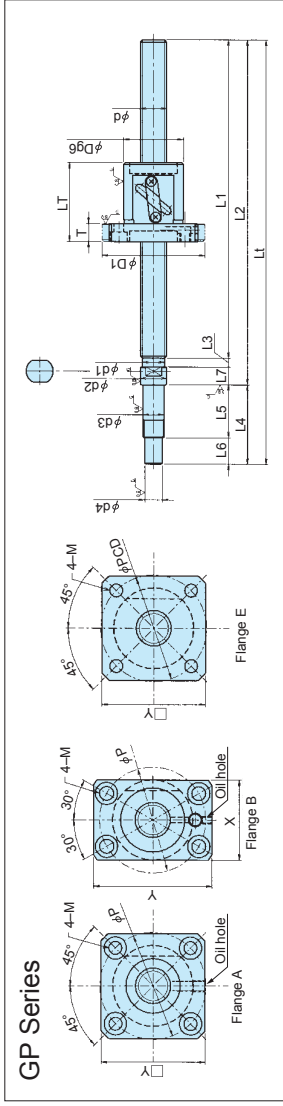
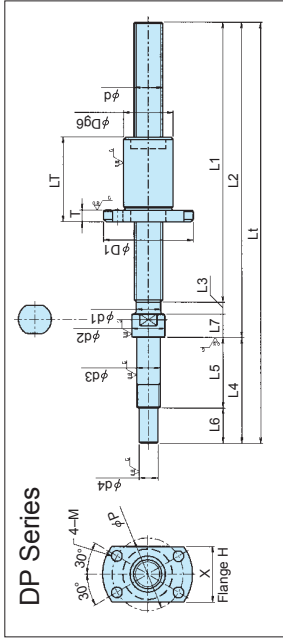




## D Series - Deflector Method/G Series - Tube Method DP(C3 Accuracy)/GP(C3 Accuracy)



DP Series

GP Series

### DP Series

Model No.	Shaft dia. d	Lead	Root dia. d1	Circ. & Turn	Axial clearance	Basic Dynamic Load Rating (N/C)	Basic Static Load Rating (N/C)	Shaft Dimensions										Nut Dimensions								Wiper	Oil Hole
								L1	L2	L3	L4	L5	L6	d3	d4	D	Lt	T	D1	Y	X	P	Screw Flange	Flange			
DP0601JS-HDNR-0130B-C3F/S	6	1	—	1×3	F/S	550 (530)	1150 (650)	90	100	130	3	30	22.5	6	7.5	4.5	10	14.5	3.5	22	—	14	16	M3	H	N	N/A
DP0601JS-HDNR-0210B-C3F/S	6	1	—	1×3	F/S	650 (630)	1600 (650)	132	143	160	3	37	27	8	10	6	12	15	4	25	—	16	19	M3	H	N	N/A
DP0801JS-HDNR-0180B-C3F/S	8	2	7	1×3	F/S	1350 (1220)	2300 (1300)	132	143	180	3	37	27	8	10	6	14	21	4	27	—	17	21	M3	H	N	N/A
DP0802JS-HDNR-0260B-C3F/S	10	2	9	1×3	F/S	1550 (1410)	3000 (2100)	172	183	220	3	37	27	8	10	6	16	22	5	33	—	21	25	M4	H	N	N/A
DP1002JS-HDNR-0320B-C3F/S	12	2	11	1×3	F/S	1850 (1700)	3600 (2500)	242	255	300	3	45	30	10	15	8	18	22	5	35	—	22	27	M4	H	N	N/A
DP1202JS-HDNR-0400B-C3F/S	14	3	10.3	1×3	F/S	3450 (3100)	6100 (4200)	340	355	400	5	45	30	10	15	8	21	36	5	38	—	23	30	M4	H	P	N/A
DP1203JS-HDPR-0300B-C3F/S	14	4	12.1	1×3	F/S	4600 (4200)	8600 (5260)	470	485	530	5	45	30	12	15	10	26	40	10	45	—	29	35	M4	H	P	N/A

\*Asterisk (\*) model No. has the following shaft overall length (Lt) in addition 530mm: 230, 280, 330 and 430mm.

### GP Series

Model No.	Shaft dia. d	Lead	Root dia. d1	Circ. & Turn	Axial clearance	Basic Dynamic Load Rating (N/C)	Basic Static Load Rating (N/C)	Shaft Dimensions										Nut Dimensions								Wiper	Oil Hole
								L1	L2	L3	L4	L5	L6	d3	d4	D	Lt	T	D1	Y	X	P	Screw Flange	Flange			
GP081FDS-AAFR-0170B-C3F/S	8	1.5	7.1	2.5×1	F/S	850 (530)	1900 (650)	122	133	170	3	37	27	8	10	6	16	24	5	32	25	—	23	M3	A	F	N/A
GP081FDS-AAFR-0250B-C3F/S	8	2	6.6	2.5×1	F/S	1950 (1220)	2600 (1300)	122	133	170	3	37	27	8	10	6	20	30	5	36	28	—	27	M3	A	F	N/A
GP0802DS-AAFR-0250B-C3F/S	10	2	8.6	2.5×1	F/S	2250 (1410)	3300 (1650)	162	173	210	3	37	27	8	10	6	23	30	5	40	31	—	31	M4	E	F	N/A
GP1002DS-AAFR-0210B-C3F/S	10	2.5	8.3	2.5×1	F/S	1700 (1200)	4200 (2100)	161	173	210	4	45	30	10	15	8	24	35	8	43	33	—	32	M4	A	F	N/A
GP102FDS-AAFR-0320B-C3F/S	12	2	10.6	2.5×1	F/S	2450 (1540)	4100 (2050)	242	255	300	3	45	30	10	15	8	25	35	8	44	34	—	33	M4	A	P	N/A
GP1202DS-AAFR-0400B-C3F/S	15	2.5	10.3	2.5×1	F/S	2950 (1850)	5100 (2500)	240	255	300	3	45	30	10	15	8	26	34	8	45	35	—	34	M4	A	P	N/A
GP1204DS-AAFR-0400B-C3F/S	15	4	10.1	2.5×1	F/S	3600 (2260)	6750 (3370)	240	255	300	5	45	30	10	15	8	30	41	10	54	41	—	41	M5	A	P	M6
GP1204DS-AAFR-0400B-C3F/S	15	5	9.5	2.5×1	F/S	5950 (3740)	9800 (4900)	390	405	450	3	45	30	10	15	8	30	41	10	50	45	32	40	M4	B	L	M6
GP1205DS-BALR-0450B-C3F/S	15	2	13.6	2.5×1	F/S	2700 (1700)	5500 (2750)	242	255	300	3	45	30	10	15	8	30	37	10	54	48	32	41	M5	B	L	M6
GP1504DS-BALR-0600B-C3F/S	20	4	13.1	2.5×1	F/S	4100 (2580)	8550 (4270)	340	355	400	5	60	40	15	20	12	32	41	10	56	48	32	43	M5	B	L	M6
GP1504DS-BALR-0600B-C3F/S	20	5	12.5	2.5×1	F/S	6900 (4340)	12500 (6250)	340	355	400	5	60	40	15	20	12	34	44	10	58	50	34	45	M5	L/S	L	M6
GP1505DS-BAAR-0600B-C3F/S	20	4	18.1	2.5×2	F/S	8600 (5410)	23400 (11700)	525	545	605	5	60	40	15	20	12	40	49	10	64	49	—	51	M5	A	L	M6
GP2004ES-AAALR-0600B-C3F/S	20	5	17.5	2.5×1	F/S	8350 (5260)	17500 (8750)	925	945	1005	5	60	40	15	20	12	40	48	12	68	60	40	53	M6	B	L/S	M6

Axial clearance S:0 F:0.005mm Wiper material N:No wiper P:Plastic F:Felt L:Lip seal SL:SUBSEAL \*Please select L or S when your order. Load rating value inside of ( ) shows S (Axial clearance 0). N/A:Not applicable